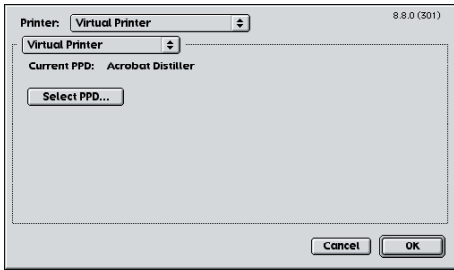


Quark XPress 4/5 print to PostScript

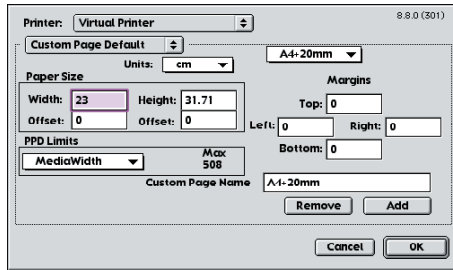
Printing a **PostScript** file from **Quark Xpress 4.1.1** or higher, to be converted to a PDF using **Acrobat Distiller**. This example was created on an **Apple Macintosh**, running **OS 9.2.2**



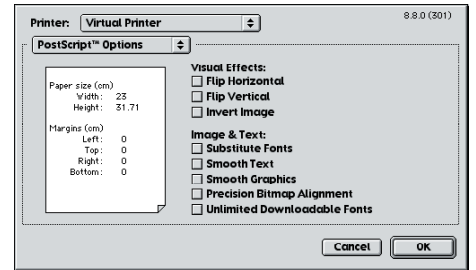
1/ Choose **File>Print**. Click **Page Setup** and select **Virtual Printer**. Check the **Current PPD** is **Acrobat Distiller**. If not, press **Select PPD**: it's normally in **System Folder>Extensions>Printer Descriptions**.



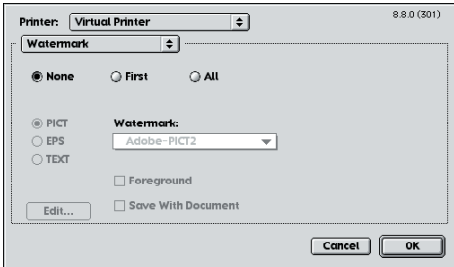
2/ Select the **Custom Paper Size** window. Enter a relevant name and the **Paper Size** of your publication plus 20mm, with **Margins** set to zero, and then hit **Add**. The new size should now be listed.



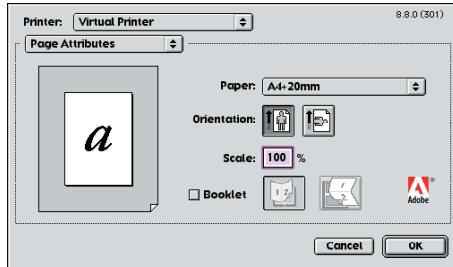
3/ Move to the **PostScript™ Options** window. Make sure all the **Visual Effects** and **Images & Text** options are turned off. These effects can produce unpredictable results.



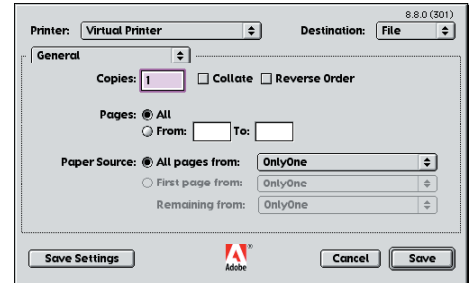
4/ Select the **Watermark** option from the pop-up menu. Set the **Watermark** button to **None** to ensure no extraneous information is added to the final PostScript file.



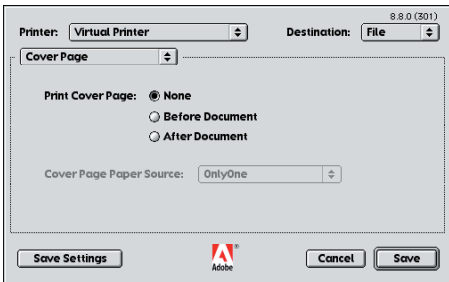
5/ Now choose the **Page Attributes** window, and select the new custom paper that you have created in the **Custom Paper Size** menu. Make sure the scale is at 100 per cent. Click **OK** to return to the Print box.



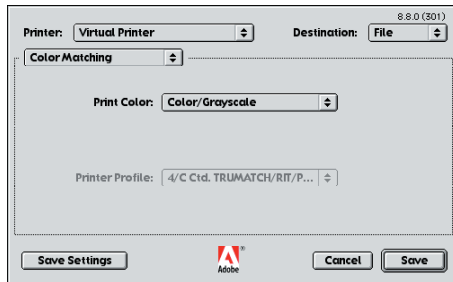
6/ Click **Printer** to open the printer settings **General** tab. The **Paper Source** selection should be set to take all pages from **OnlyOne**. Check that the **Destination** is set to **File**, which will create the PostScript file.



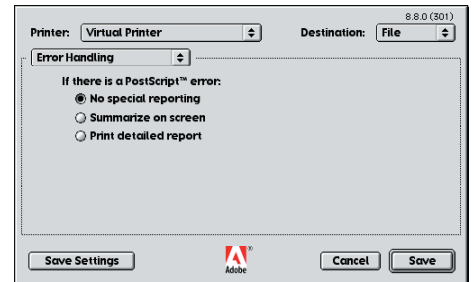
7/ Select the **Cover Page** window, and set the **Print Cover Page** option to **None**. Again, this makes sure no unnecessary extra data is saved into the final PostScript file.



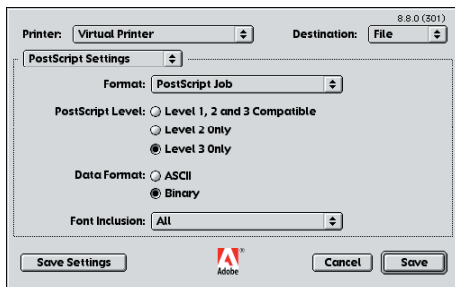
8/ Change to the **Color Matching** options and set the **Print Color** setting is **Color/Greyscale**. This will pick up the default settings for printing all images correctly.



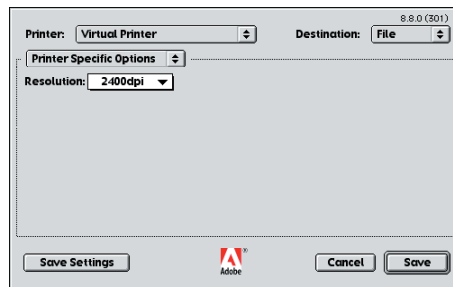
9/ In the **Error Handling** window, set the **PostScript Errors** option to **No Special Reporting**. There are also **Job Notes** and **Background Printing** windows, but these don't contain critical settings.



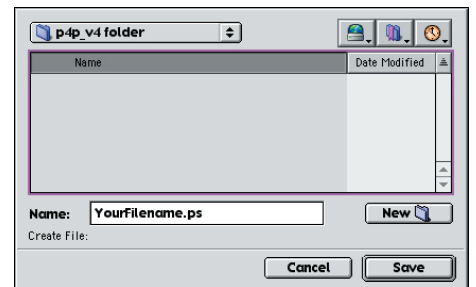
10/ In the **PostScript Settings** window, set the **Format** to **PostScript Job**, the **Postscript Level** to **Level 3 Only**, the **Data Format** to **Binary** and the **Font Inclusion** to **All**.



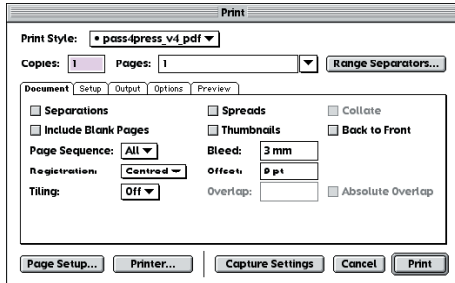
11/ Finally, in the **Printer Features** window, set the **Resolution** to **2400dpi** to correspond to the **pass4press** maximum resolution specification for linework items.



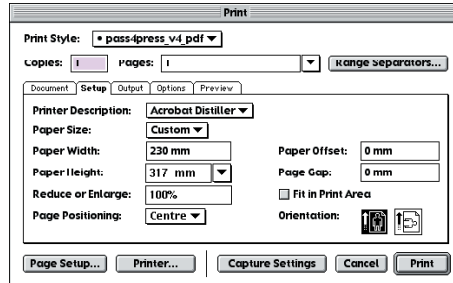
12/ Double-check your entered settings. You can save the settings for future use by selecting **Save Settings**. Click the main **Save** button and choose a location to save the PostScript file.



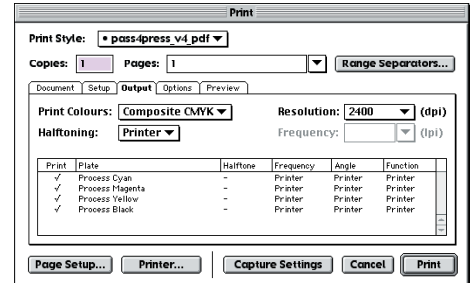
13/ You will now be returned to the **Document** tab of the main **Print** window. Duplicate the settings shown below. The **Offset** box is in points; either enter **9 pt**, or **3mm**, which will be converted to **8.504 pt**.



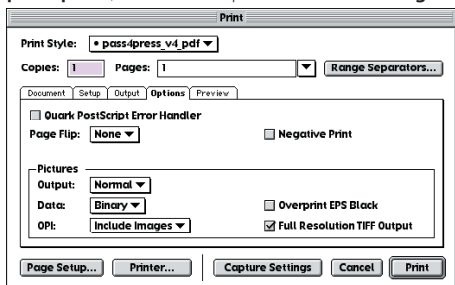
14/ Change to the **Setup** tab. Make sure that the paper size is **Custom**, reflecting your **Custom Page Size** created in **Page Setup**. **Page Width** should be your publication size plus 20mm.



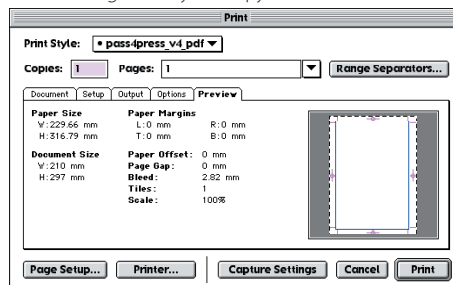
15/ Select the **Output** tab. This lists the colours present in the document, and will warn of any rogue spot colours. Make sure the **Print Colours** is **Composite CMYK** and **Resolution** is **2400dpi**.



16/ In the **Options** window, set the **Data** format to **Binary** and that the **Full Resolution Tiff Output** is checked. Although **OPI** is not supported by **pass4press**, set the **OPI** option to **Include Images**.



17/ The **Preview** window is a way to visually check the trim, bleed and media boxes for the document are correct. Click **Print** to create the **PostScript** file. Drop the resulting file on your copy of **Distiller**.



18/ In future you can select the **Print Style** in the top pop-up menu in the main **Print** dialogue box. The **Layers**, **Bleed** and **Preview** settings will still need to be checked and entered.

